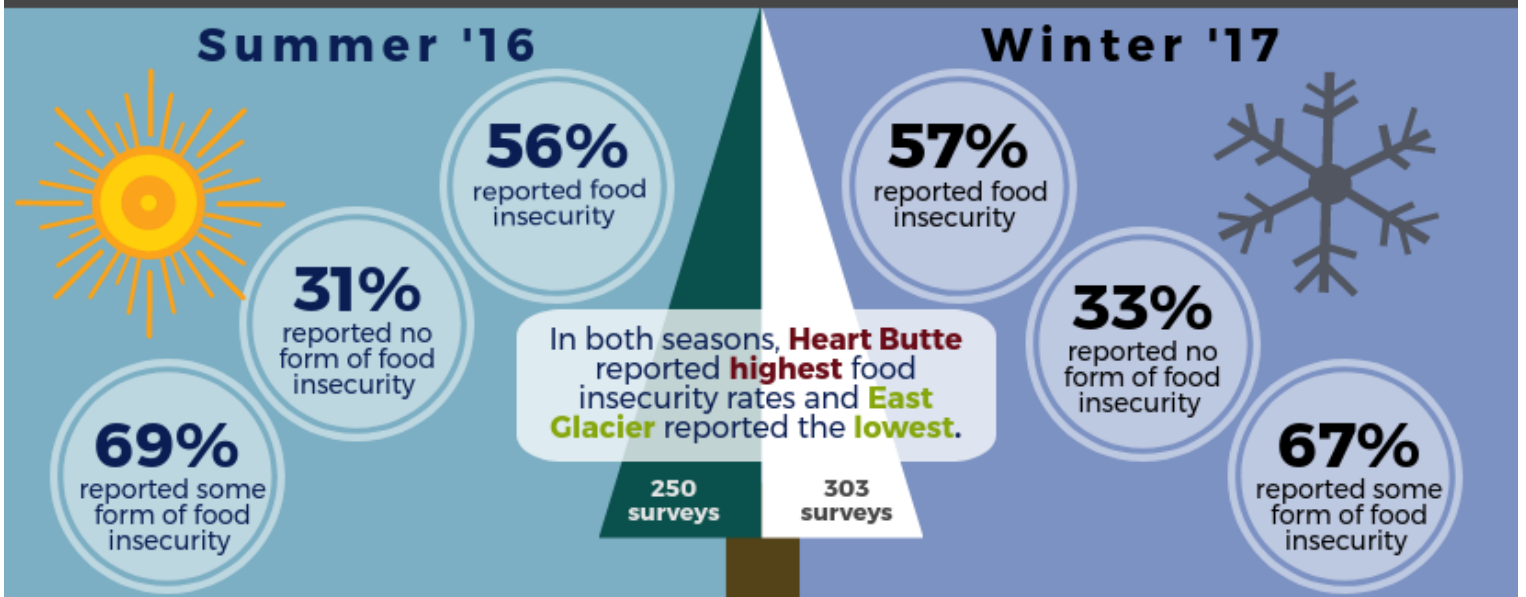


Are we food secure?

Food security is access by all people at all times to enough food for an active, healthy life.

FAST Blackfeet is dedicated to identifying areas of food insecurity on the Blackfeet Reservation and exploring possible solutions.

Residents from all over the **Blackfeet Reservation** completed surveys to help us learn about the community's food security. The information, from summer 2016 and winter 2017, paints a comprehensive and seasonal picture of the food security status on the reservation.



What does this mean?

Overall, survey results indicated **food insecurity rates more than 4.5 times the national average** (12.3%). This means the average household on the Blackfeet Reservation lacked reliable access to safe, nutritious, and affordable foods at some time in the last 12 months, regardless of the season.

Additionally, results from both seasons indicated **Heart Butte may be the most vulnerable community to food insecurity** on the Blackfeet Reservation.



What can we do?

Based on community data, FAST Blackfeet has identified **opportunities for change** on the Blackfeet Reservation:

- Consider **Reservation-wide tribal policies** requiring small food retail locations to participate in the WIC program.
- Provide **food budget management education** for residents.
- Assist the Blackfeet Tribe to **re-establish a food bank** in Browning that is capable of expansion through mobile sites targeting the remote areas of the Reservation.
- Target the **most food insecure populations** (Heart Butte and Browning) first with hunger related programming.
- Disseminate the **findings to the community and leaders** to leverage funding and support for additional food security and food sovereignty efforts.
- Identify **Master Gardeners and farmers** in the community who can assist with teaching best practices to residents.
- Establish a consistent **farmers' market and/or food co-op** on the Blackfeet Reservation.
- Create and implement a **Reservation-wide Food Code**.
- Collaborate with tribe to establish an **Agricultural Resource Management Plan** to protect and promote the cultivation of local foods from production phase, through processing, distribution, access, and consumption.

If you wish to learn more or want to know **how you can help** contact us at FASTBlackfeet@gmail.com.

powered by